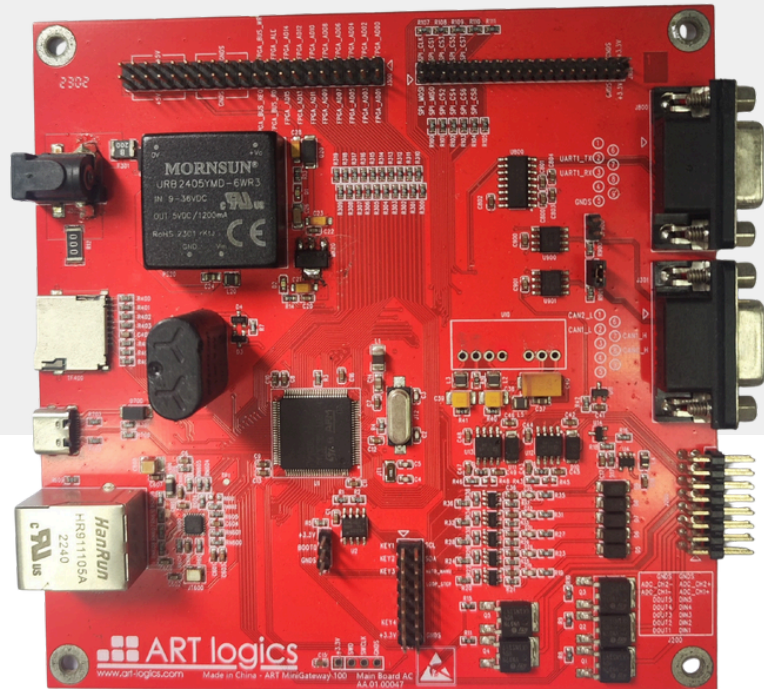


Minigategateway 100



OVERVIEW

The Mini Gateway 100 is a Real-Time sequencer and controller designed to run fully configurable test scenarios while controlling a wide range of extendable resources. Once test sequences are defined by the user, the board executes the actions and sends results back to a host via USB-C or Ethernet TCP. Additionally, it is equipped with a micro SD card slot, allowing it to function as a standalone device without requiring a connected host.

DIMENSION

L*W =133.4mm*143.4mm

KEY FEATURES

- Real-Time test sequencer with a resolution of 10 ms.
- Supports hardware synchronization (Master/Slave modes).
- USB-C 2.0 Full Speed communication interface.
- 100 Mbps Ethernet communication link via TCP (configurable IP, masks, and sockets).
- External power supply control via SCPI over RS-232.
- 2 High-speed CAN channels (ISO 11898-2) with configurable Bit rate up to 1 Mbit/s.
- Adjustable CAN termination via onboard jumpers.
- Built-in support for the SCPI and Modbus protocols.
- 2 communication buses for extendable resources.
- Micro SD card support for Standalone Mode logging and configuration.

POWER REQUIREMENT

DC Power Supply: 24V voltage supply via DC power connector

USB Power Supply: 5V voltage supply via USB connection.

DETAILED SPECIFICATIONS:

Digital Input	Value	Unit
Channels	5	
Input Voltage Range	-50 to +50	V
Input Threshold	2.5	V
Hysteresis (Typical)	17	mV
Input Impedance	100	kOhms

Digital Output	Value	Unit
Channels	5	
Output Structure	Open-Drain	N/A
Maximum Voltage	35	VDC
Maximum Current	2	A
Output Impedance	60	mOhms
Off Leakage Current	75	uA

Note: The digital outputs are protected against short circuits to positive battery and over-temperature.

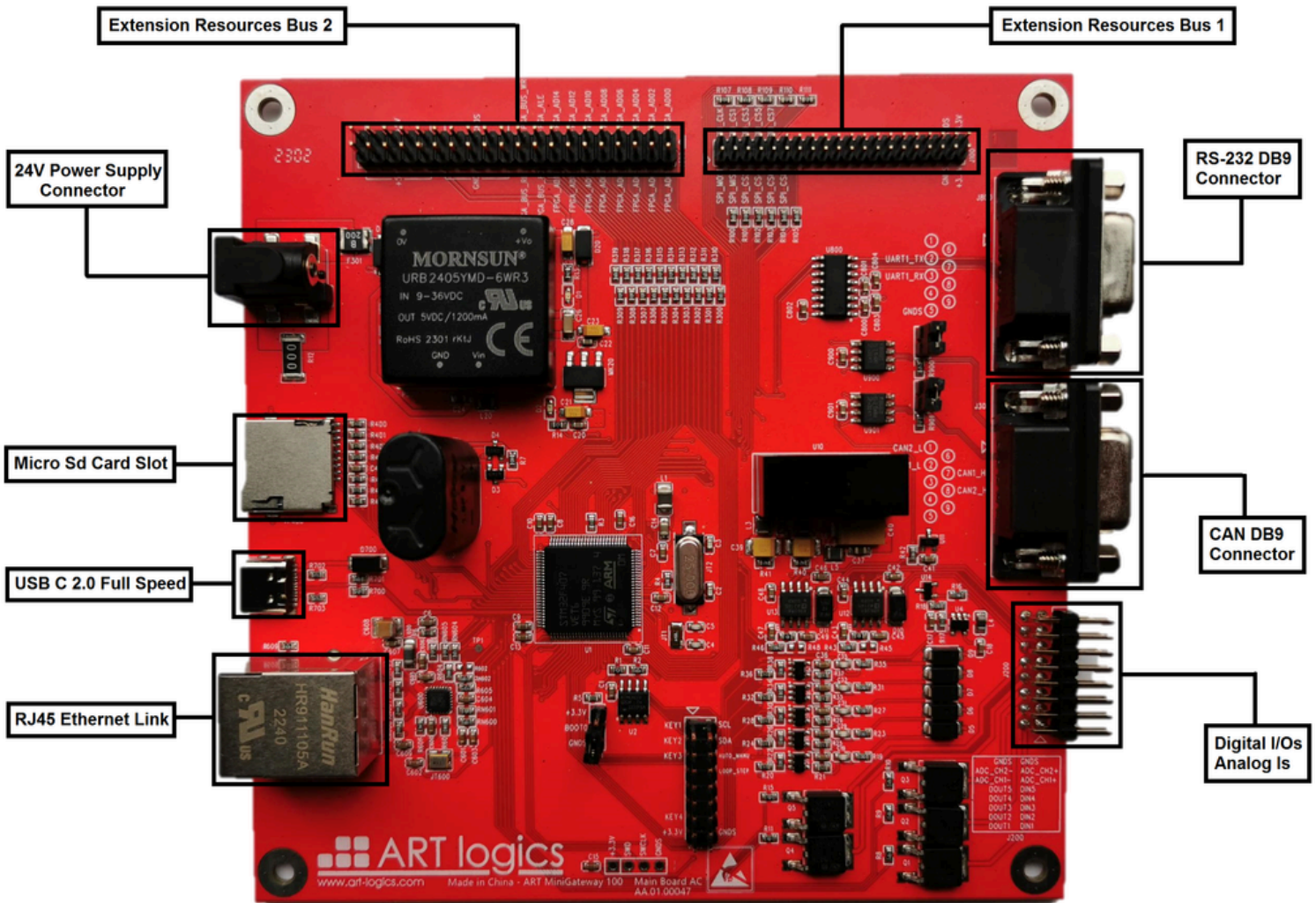
Analog Input	Value	Unit
Channels	2	
Resolution	12	bits
Maximum Differential Voltage	-5 to +5	V
Accuracy	5	mV
Input Impedance	100	kOhms

Note: 1 LSB equates to 0.8 mV.

EXTENDABLE RESOURCES

Through the 2 extension buses, the Mini Gateway 100 can be scaled with additional boards:

Resource	Maximum Extension Channels	Required Board
Analog Input	48 channels	EM-A20 extension board
Analog Output	48 channels	V10 extension board
Relays	96 channels	RM10 extension board



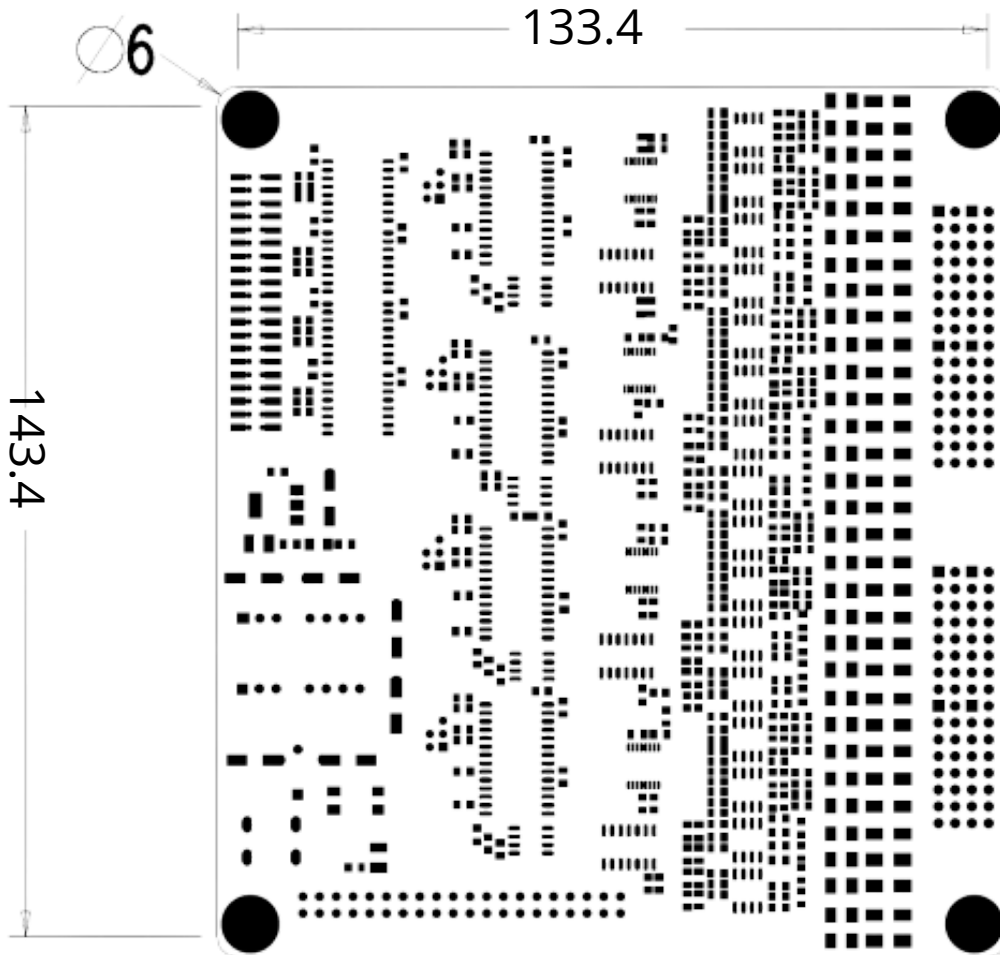
SUPPORT AND SERVICE

Calibration

ART logics measurement hardware is calibrated to ensure measurement accuracy and verify that the device meets its published specifications. To ensure the ongoing accuracy of the measurement hardware, ART logics offers basic or detailed recalibration service.

PHYSICAL

Dimension:
L*W = 133.4mm*143.4mm



ART Logics (Shanghai) Testing Equipment CO., Ltd
艾驰电子检测设备技术（上海）有限公司

Tel: 021-61075469
Room 105, No. 258, Chengjiaqiao Road, Shanghai, P.R. China

www.art-logics.com
support@art-logics.com